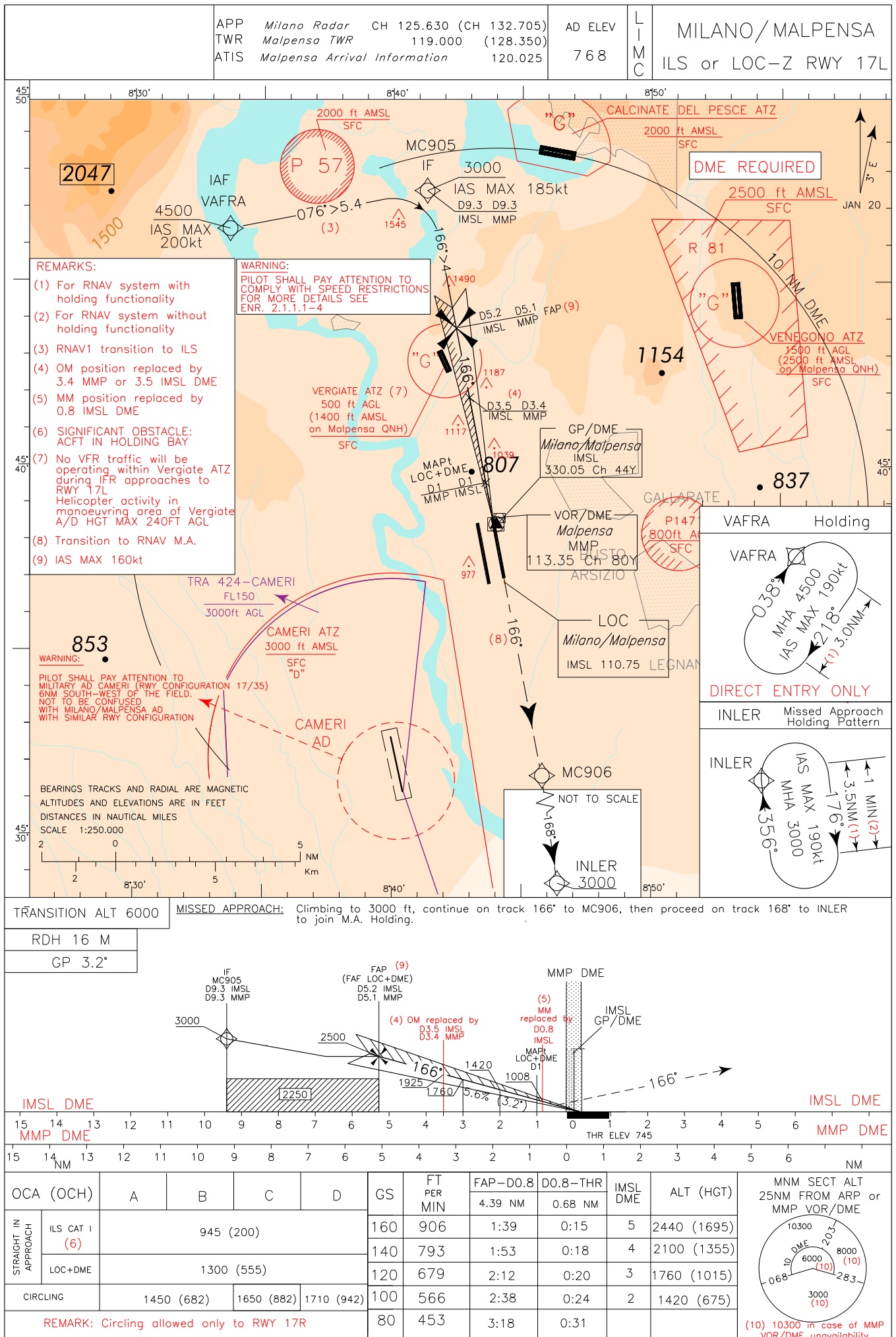


DOC 8168 ED 6 – 2014 AMDT 8

CHANGE: MAGNETIC VARIATION UPDATED



TABULAR DESCRIPTION

RNAV TO ILS APPROACH RWY17L TRANSITION

Serial Number	Path Terminator	Waypoint Identifier	Fly Over	Course °M(°T)	Magnetic Variation	Distance (NM)	Turn Direction	Altitude (ft)	Speed Limit (kt)	VPA/ TCH	Navigation Specification
010	IF	VAFRA	-	-	-	-	-	+4500	200	-	RNAV 1
020	TF	MC905	-	076 (078.9)	-	5.4	-	+3000	185	-	RNAV 1

TRANSITION TO RNAV MISSED APPROACH

Serial Number	Path Terminator	Waypoint Identifier	Fly Over	Course °M(°T)	Magnetic Variation	Distance (NM)	Turn Direction	Altitude (ft)	Speed Limit (kt)	VPA/ TCH	Navigation Specification
010	CF	MC906	-	166 (169.0)	3	-	-	-	-	-	RNAV 1
020	TF	INLER	-	168 (170.4)	-	9.6	-	+3000	-	-	RNAV 1

Path Terminator	Waypoint Identifier	Inbound Course °M (°T)	Leg Distance (NM) (1)	Timing(min.)/ Waypoint Distance (NM) (2)	Turn Direction	Minimum Altitude (FT)	Maximum Altitude (FL)	Speed Limit (kt)	Magnetic Variation (°)	Navigation Specification
HM (3)	VAFRA	038 (041.0)	3.0	-/ -	R	+4500	-	190	3	RNAV1
HM	INLER	356 (359.0)	3.5	1.0/ -	R	+3000	-	190	3	RNAV1

- (1) RNAV system with holding functionality
 (2) RNAV system without holding functionality
 (3) Direct Entry Only

WAYPOINT LIST

Waypoint Identifier	Coordinates
MC905	45°47'30.48" N 008°41'19.29" E
MC906	45°31'40.95" N 008°45'42.02" E